

# Device programming with TRWinProg

## Installation- and Operating Instructions

*Please keep for further use !*

Edition date/Rev. date: 27.10.2003  
Document no./Rev. no.: TR - E - BA - GB - 0023 - 02  
Software version: 1.0.8  
File name: TR-E-BA-GB-0023.DOC  
Author: MÜJ

**TR - Electronic GmbH**  
**Eglshalde 6**  
**D-78647 Trossingen**  
Germany  
Phone: ++49 (0)7425/228-0  
Fax: ++49 (0)7425/228-33

## Imprint

### TR-Electronic GmbH

D-78647 Trossingen  
Eglishalde 6  
Tel.: (0049) 07425/228-0  
Fax: (0049) 07425/228-33  
E-mail: [info@tr-electronic.de](mailto:info@tr-electronic.de)  
<http://www.tr-electronic.de>

© Copyright 2002 TR-Electronic

## Right of modification

We reserve the right to modify the technical information contained in this document without prior notice in the interests of ongoing improvements to our products and documentation.

## Printing

This manual was produced on a personal computer using MS-Word for Windows. The text was printed in *Arial* type.

## Fonts

*Italics* and **bold** type are used for the title of a document or to emphasize text passages.

Passages written in *Courier* show text which is visible on the display as well as software menu selections.

"< >" refers to keys on your computer keyboard (e.g. <RETURN>).

## Note

Text following the "NOTE" symbol describes important features of the respective product.

## Copyright Information ©

MS-WORD, Windows, Windows 95, Windows 98, Windows Me, Windows NT, Windows XP and MS-Internet- / Windows-Explorer are registered trademarks of Microsoft Corporation.

## Revision History

**i****Note**

The cover of this document shows the current revision status and the corresponding date. Since each individual page has its own revision status and date in the footer, there may be different revision statuses within the document.

Document created:

21.05.2002

<b>Revision</b>	<b>Date</b>
General program modifications	27.10.2003

**Contents**

**Imprint..... 2**

**Revision History ..... 3**

**Contents ..... 4**

**1 Program description ..... 5**

**2 System requirements ..... 6**

**3 Program installation..... 6**

**4 Device connection to the PC..... 7**

**5 Program start ..... 8**

**6 The TRWinProg - program surface..... 9**

    6.1 File management..... 10

    6.2 Device communication ..... 11

    6.3 Settings..... 12

    6.4 Help functions ..... 14

    6.5 Functions of the symbol bar ..... 15

    6.6 Device dependent menu bar ..... 16

        6.6.1 Parameter inputs ..... 17


    6.7 Status messages ..... 18


**7 Firmware-Update ..... 21**

**8 Global error- / warning messages ..... 22**

    8.1 Causes and remedies..... 22

        8.1.1 Status bar ..... 22

        8.1.2  Error messages..... 22

        8.1.3  Warning messages ..... 26

**9 Accessories ..... 28**

## 1 Program description

"TRWinProg" is a Windows PC program for the programming of TR devices. This means that all TR product areas such as rotary encoders, linear encoders, laser measuring devices, transformation measuring systems, displays etc. can be programmed over one software.

Each device is defined by a so-called "device-file" (\*.tr). In this device-file all device-specific parameters are contained, which are predefined by a default value. If TRWinProg detects a device connected to the PC, suitably to the device the appropriate device-file is loaded into the PC program and specifies the program surface according to the necessary device parameters. I.e., always only the necessary menus are displayed in the form of register cards, how this is necessary for the programming of each connected device. Over a parameter list it is defined, which parameters in the individual menus are displayed.

Therefore the user has the possibility to design the program surface in such a way, as it is required for its application. The carried out settings can be stored in a so-called "parameter-file" (\*.prm) and can be restored by loading the file. The change to a new application can be executed therefore fast and easy.

The communication between PC and TR device are carried out via the serial RS232 interface of the PC. For the conversion of the device signals (RS422/RS485) to RS232 signals a PC adapter is necessary, whereby also a potential separation between PC and the connected device is ensured and it can be realized longer distances.

TRWinProg supports also the connection of an infrared - COM-interface adapter according to the IrDA-1.0 standard. An external voltage supply for the adapter isn't needed, since the supply will be managed via the COM interface of the PC. The communication distance between the IR adapter and the device is in the range of 0 to approx. max. 200 cm and makes possible a simply programming without cable.

Momentary in preparation is the communication possibility over the USB 2.0 interface.

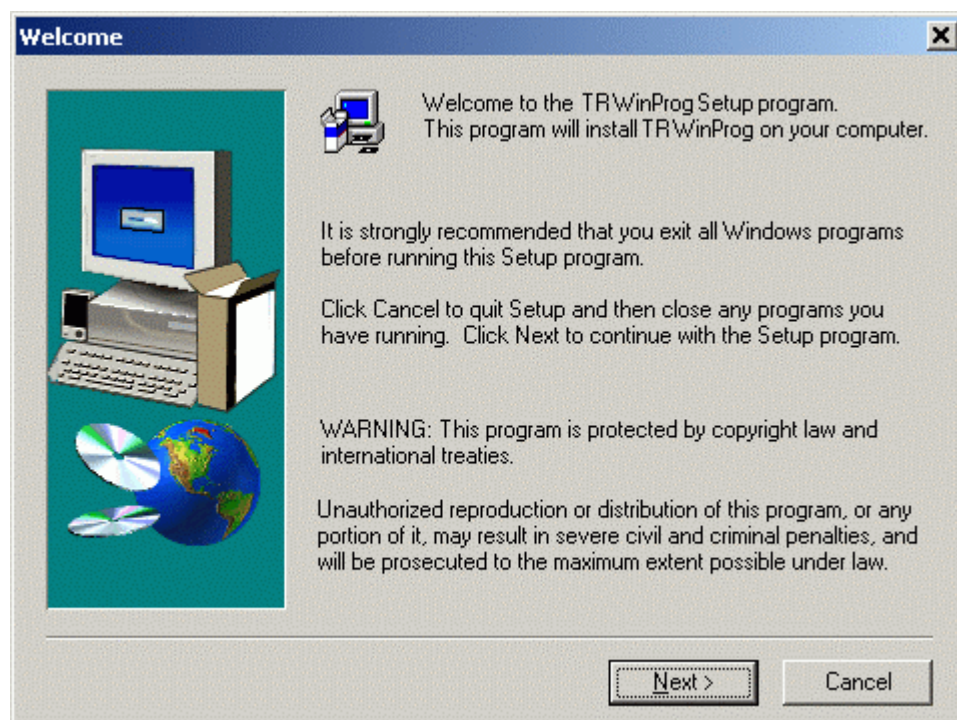
## 2 System requirements

- **PC:**
  - 80-486 platform or higher
  - approx. 10 MB hard disk space
  - 16 MB RAM
  - CD-ROM
  - additional free COM interface
  
- **Operating System:**
  - Windows 95/98/Me or
  - Windows NT 4 / 2000 / XP

## 3 Program installation

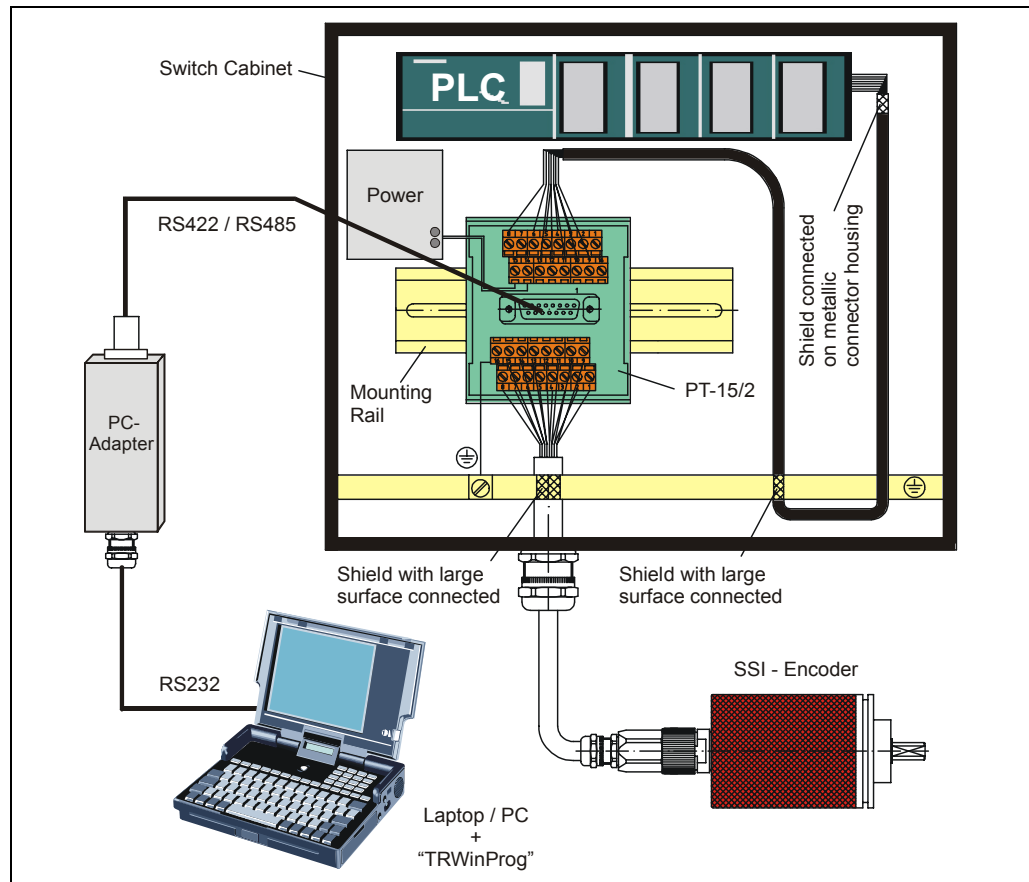
Usually the PC program "TRWinProg" is delivered on a CD-ROM. If during inserting the TRWinProg-CD into your CD-ROM drive the setup program is not started automatically due to the standard settings of your Windows system, for beginning the installation in the Windows Explorer in the main directory of the CD-ROM the file "Setup.exe" must be double-clicked.

Then follow the statements of the TRWinProg setup program.

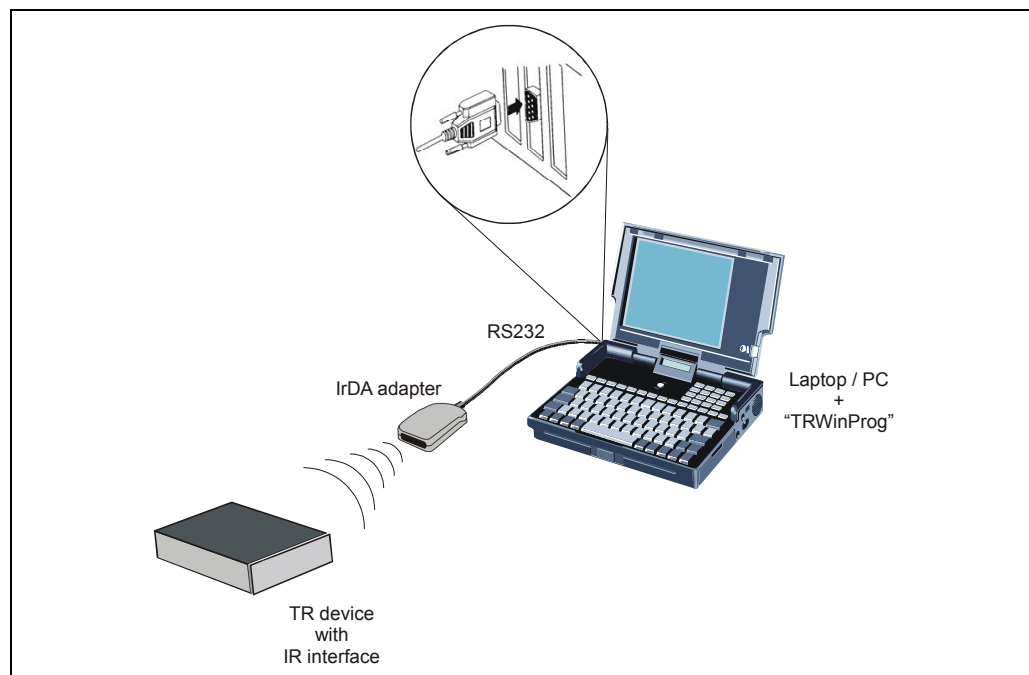


### 4 Device connection to the PC

Connecting scheme, example via PC adapter with SSI encoder



Connecting scheme, example via IR adapter



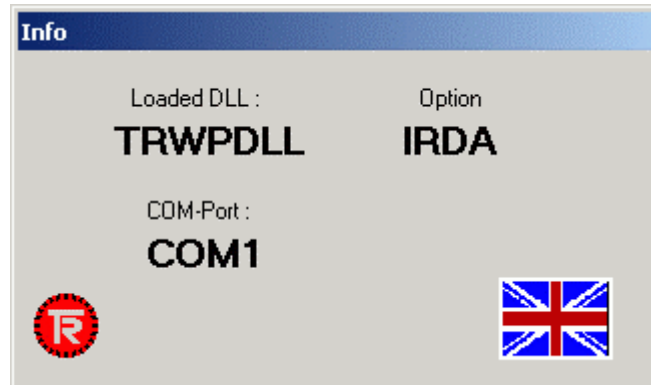
Programming - Accessories, see page 28

## 5 Program start

The program is started via the menu *Start --> Programs --> TRWinProg*.

If TRWinProg is to be started automatically after Windows was started, a link of TRWinProg.exe can be entered into the startup folder of Windows.

After the program start, for approximate two seconds the following information window is displayed:



The window has the function to inform the user shortly about the predefined global program settings, the window doesn't have any input possibilities.

The informations are confining itself on:

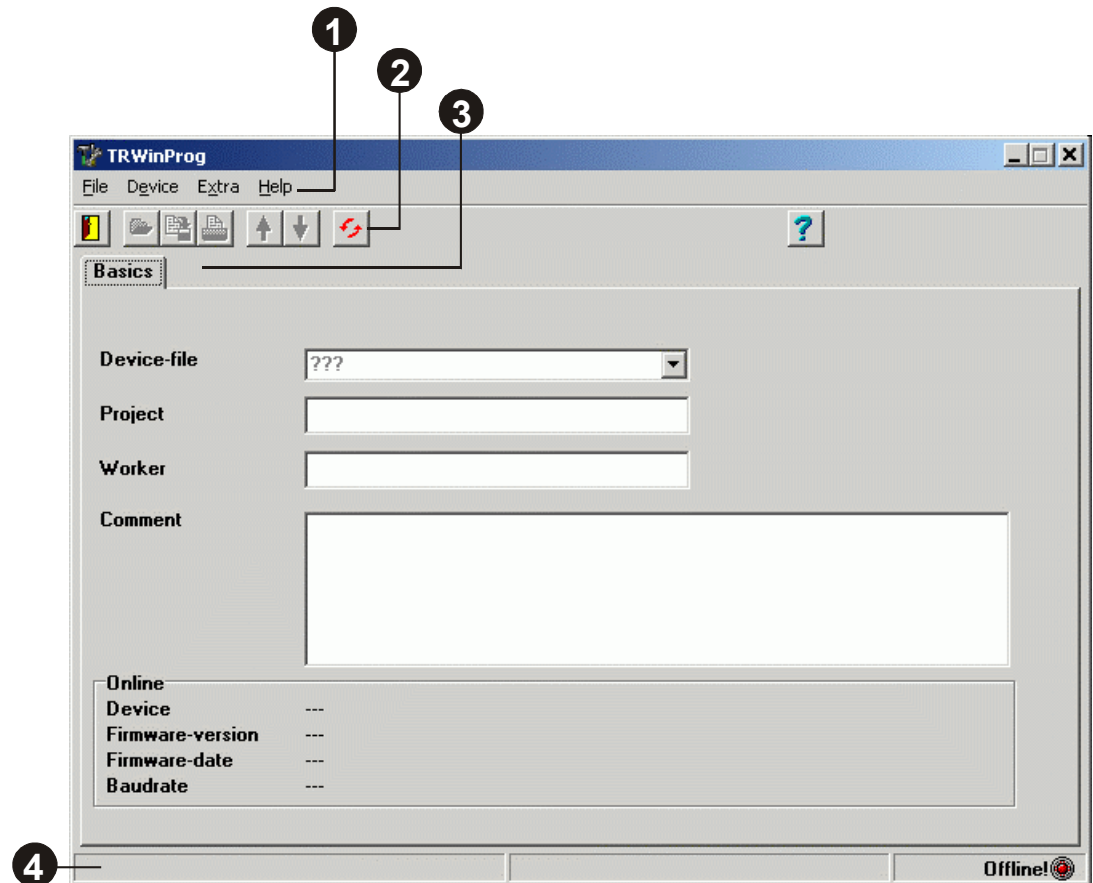
- loaded program library (\*.DLL)
- used serial line option, e.g. IRDA, what means that the communication between PC and device is realized via the IR adapter
- used COM interface
- adjusted language

**Prerequisite for the taking place of the communication between PC and connected device is, that these settings are specified according to the user conditions. These settings should be carried out therefore as first (see menu *Extra --> Global* in the offline operation, page 12).**



## 6 The TRWinProg - program surface

Main screen of TRWinProg in the offline operation, without loaded device- and parameter-file.



[\[1\] Main Menu Bar](#)

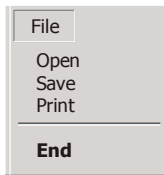
[\[2\] Symbol Bar](#)





[\[3\] Device dependent menu bar in the form of register cards](#)

[\[4\] Status Bar](#)

## 6.1 File management

### [\[1\] Main Menu Bar](#)



At first the options *Open* , *Save*  and *Print*  under the menu *File* are inactive and get only active in the **offline operation**, if a device-file \*.tr (definition of the device type) has been selected. *End*  closes the program TRWinProg.

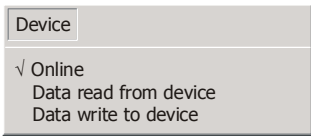
About the option *Open* a saved "TR parameter-file" (\*.prm) can be loaded into the program. While loading a comparison is made whether the device-ID of the parameter-file corresponds with the device-ID of the loaded device-file. With this comparison it is guaranteed that the parameter-file and device-file are assigned to only one device-type.

File location for the parameter-files is the sub directory "DATA", which is preselected when opening, or when saving.

The option *Save* saves appropriately to the device-file all *Device-parameters*, the *Project-description*, *Worker* and the appropriate *Comment* into the parameter-file. Therefore via the parameter-file adaptations can be carried out to different customer applications. Thus several parameter-files can be assigned to a device file.

The option *Print* prints the currently loaded parameter-file as a list to the selected printer.

## 6.2 Device communication

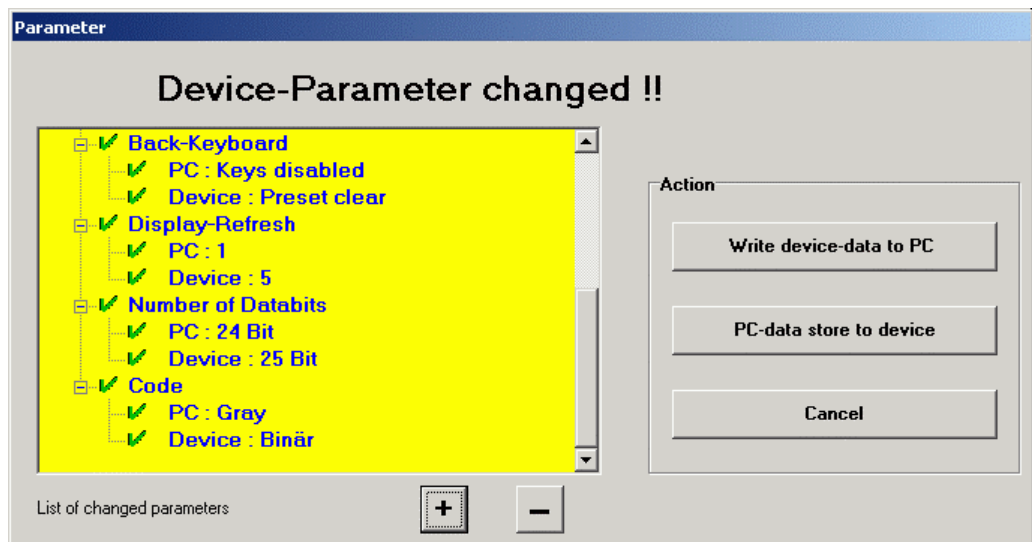


In the offline operation only the option *Online*  is active. *Data read from device*  and *Data write to device*  will be active in the online operation .

By clicking the option *Online* the program tries to establish a connection to the connected device. With effected communication it is changed over from the offline-into the online-operation. In the status bar [4] additional informations about the operational state are displayed. If for any reason no connection to the device can be established, an error message is output and the program remains in the offline operation.

With the connection establishment the program analyzes the connected device and loads automatically the appropriate device-file.

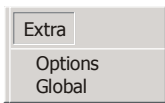
If a parameter-file was already created appropriately to the current device-file and was loaded into the program, the programmed parameters of the device are compared with those of the loaded parameter-file. If differently adjusted parameters are determined, this is displayed with a message. In this case in a window a list of the different parameters is displayed, with the possibility, to write the device data to the PC, to save the PC data into the device, or to cancel the process.



*Data read from device* causes, that the parameter-data will be read-in in the online operation from the device into the PC. Thereby the PC data are overwritten.

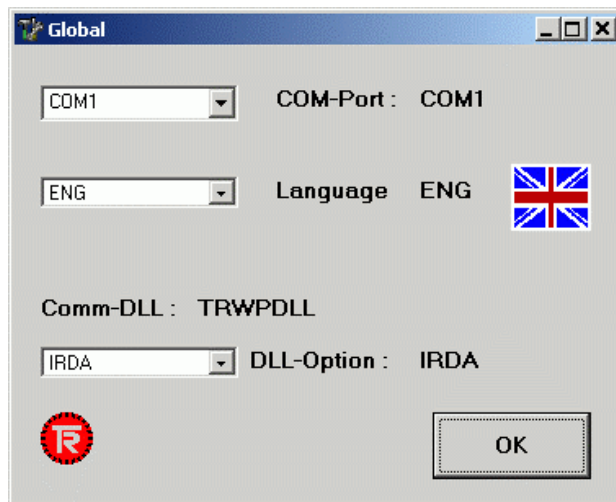
*Data write to device* causes, that the parameter-data are sent from the PC in the online operation to the device and the device is programmed therefore with the new parameter-data.

## 6.3 Settings



The two menu items *Options* and *Global* are activated only in the offline operation. To select the menu item *Options*, additionally a device-file must be loaded.

Via the item *Global* general program settings for the communication and language will be set.



### **COM-Port:**

The COM port defines which serial interface of the PC is used for the communication between the TRWinProg program and the connected device.  
Supported serial interfaces: *COM1* - *COM4*.

### **Language:**

Defines the language for the user surface of the program. It can be chosen:

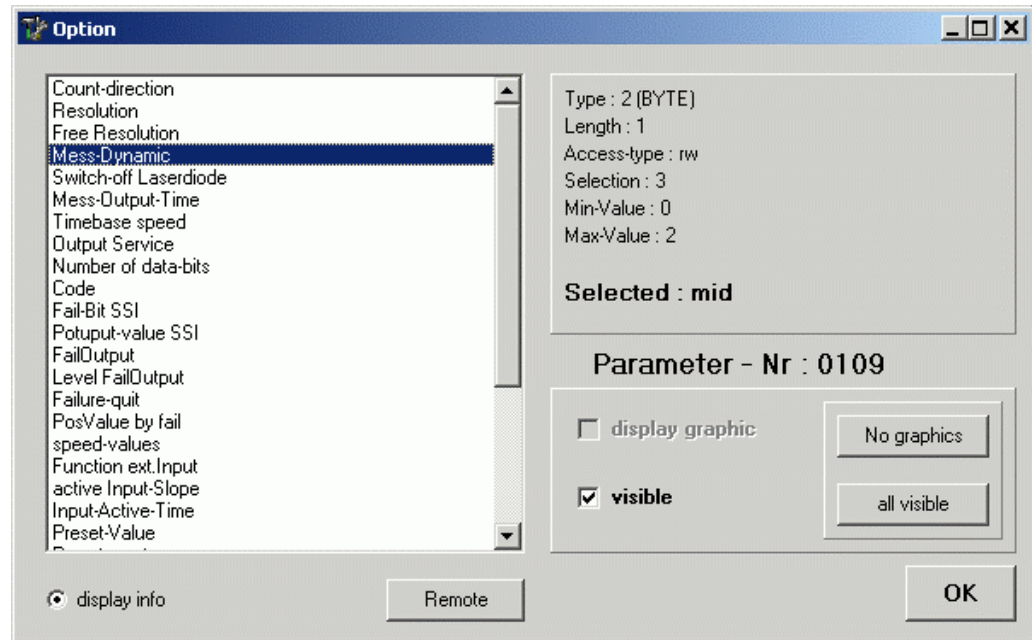
- *GER* (German)
- *ENG* (English)
- *ITA* (Italian)
- *FRA* (French)
- *ESP* (Spanish)
- *SWE* (Swedish) isn't supported at present!
- *SUO* (Finnish) isn't supported at present!

### **DLL-Option:**

Defines the way of communications (via infrared adapter or PC adapter), or the transmission rate for the data interchange:

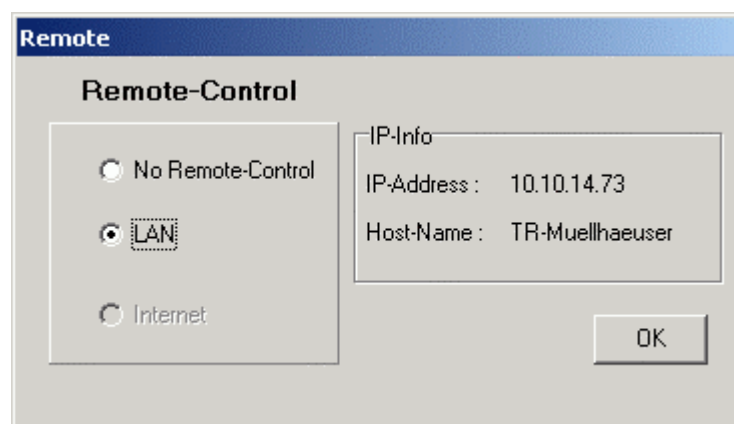
- **Auto**  
The baud rate selection is made by the program automatically. The most at the highest possible baud rate of both components (PC/device) is found out and adjusted, the communication are carried out via the PC adapter.
- **9600**  
The baud rate is adjusted to 9600 baud, the communication are carried out via the PC adapter.
- **IRDA**  
The baud rate is adjusted to 9600 baud, the communication are carried out via the infrared adapter.
- **USB (In preparation !)**

The menu item *Options* gives an overview of all parameters which are relevant for a certain device type (device-file).

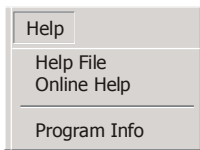



If certain parameters aren't needed, the parameter can be hidden on the program surface by selection of the corresponding parameter and the switch "*visible*". Via the switch "*all visible*" all parameters represented in the list will be displayed in the program surface. The switch "*display info*" displays some developer information and also the currently adjusted value for the select parameter.

The Button "*Remote*" is used only for internal purposes. The possibility to make a remote-access over the Internet is in preparation.



## 6.4 Help functions




About the menu item *Help File* or the symbol  a help menu is opened.

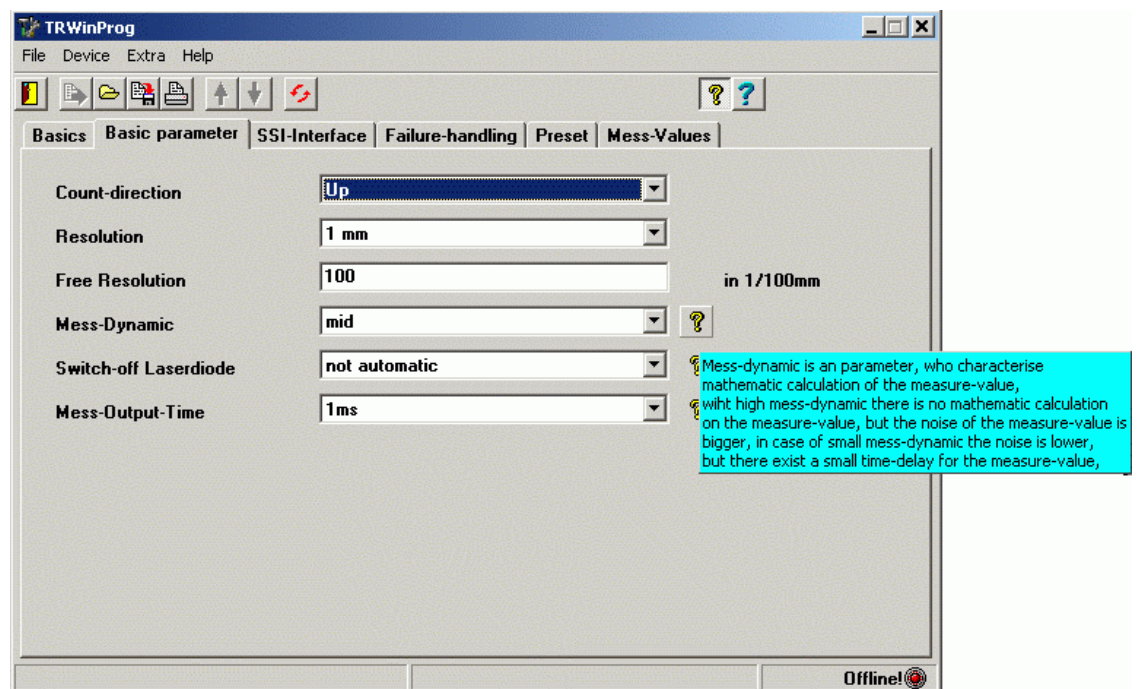
Until now, the menu item *Online Help* isn't useable and is in preparation.

*Program Info* informs about

- Program Version
- Driver Name
- Driver Version

At some devices an additional question mark symbol  appears in the symbol bar and activates an additional device specific help for some parameters. If the mouse cursor is positioned over the question mark, the help-text of the respective parameter appears in a separate Pop-Up window.

Example:




## 6.5 Functions of the symbol bar


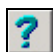
### [\[2\] Symbol Bar](#)

	Program-End
---	-------------




#### Firmware-Update

	Make possible loading a new firmware (optional)	<b>online</b>
---	---	---------------





#### Help-Functions

	Activates an additional device specific help for individual parameters (optional)
	Displays this document

#### File-Management (Description, page 10)

	<b>Open</b> , opens a parameter-file (*.prm)	<b>offline</b>
	<b>Save</b> , saves a parameter-file (*.prm)	<b>offline</b>
	<b>Print</b> , prints a parameter-file	<b>offline</b>

#### Device-Communication (Description, page 11)

	<b>Reads</b> data from the device into the PC	<b>online</b>
	<b>Writes</b> data from the PC into the device	<b>online</b>
	Offline ---> <b>Online</b>	<b>offline</b>
	Online ---> <b>Offline</b>	<b>online</b>

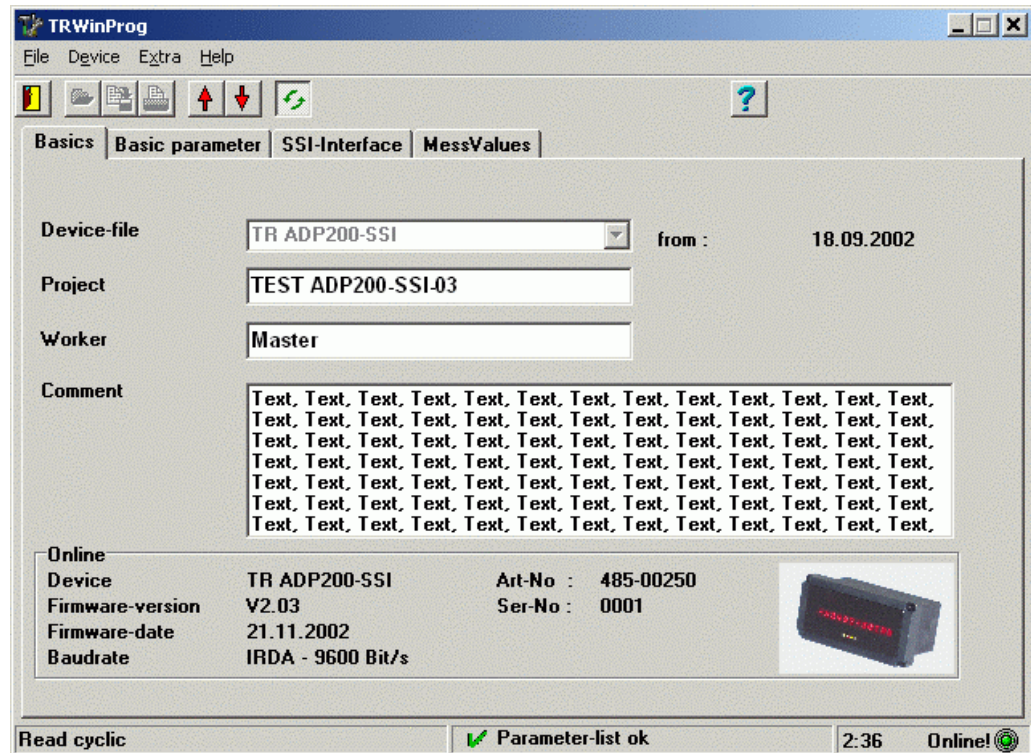


## 6.6 Device dependent menu bar

### [\[3\] Device dependent menu bar in the form of register cards](#)

The menu *Basics* is always displayed independently of the connected device, or the loaded device-file.

By loading of a device-file in the offline operation or by connecting a device in the online operation further menus will be attached according to the device-type. On the right side beside the display window of the device-file the appropriate revision status of this file is displayed.



About the entry fields *Project*, *Worker* and *Comment* the settings for a certain customer application can be described and can be saved as block as a parameter-file (\*.prm) together with the adjusted parameters via *File -- > Save*.

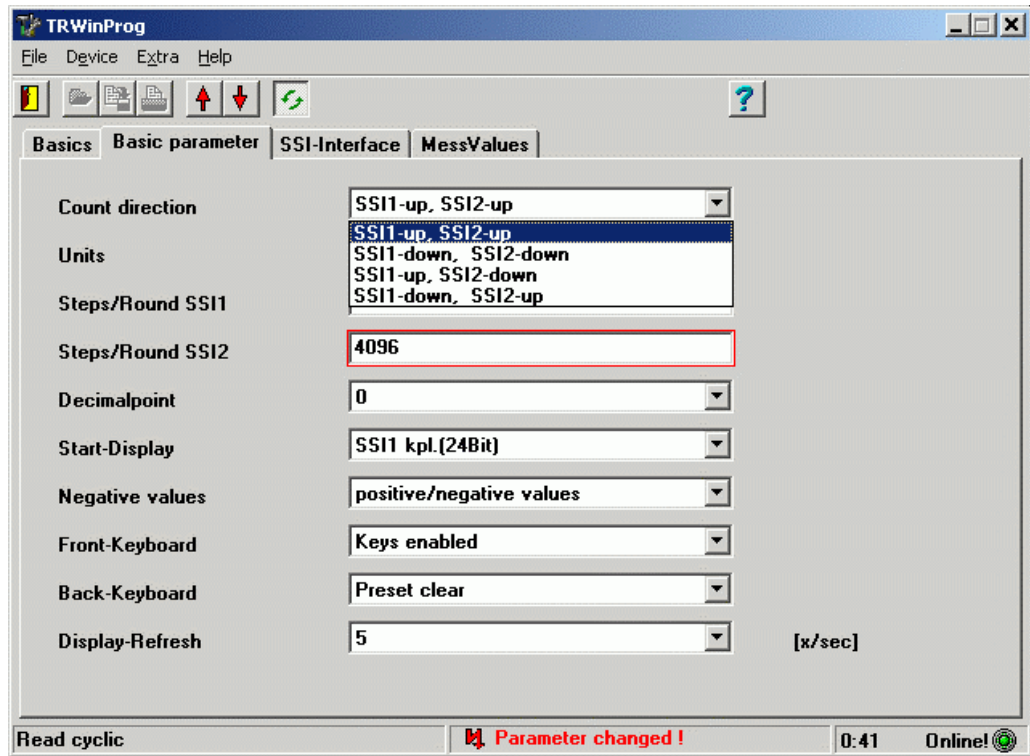
The section *Online* informs in the online operation about

- the connected *Device* (Device-ID),
- the *Firmware-version*,
- the *Firmware-date*,
- adjusted *Baud rate*,
- *Article-Number* and
- *Serial-Number*

A product photo of the connected device is displayed on the right in the section.



### 6.6.1 Parameter inputs

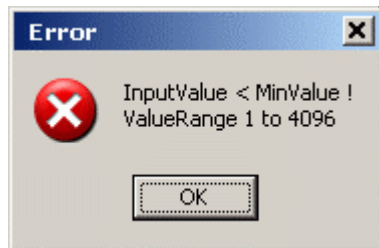


Parameter modifications can be carried out as well as in the offline operation and in the online operation. For this it is prerequisite that a device-file was loaded.

Parameter inputs are made either over a dropdown menu button  from a list with specifications, or by direct input of the parameter value. Modified parameters are marked by a red frame of the input window.

The message *Parameter changed!* in the status line (see also chapter "Status messages", page 18) informs the user about a global made parameter modification. This message and marking of the modified parameters is deleted with transmitting of the parameters to the device in the online operation or when the parameters are saved into the parameter-file in the offline operation.

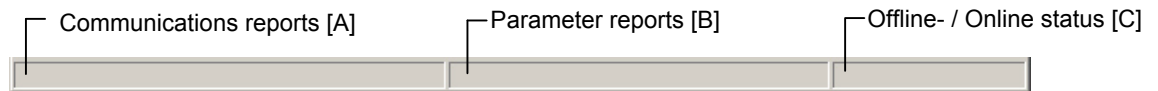
Directly made parameter inputs over the keyboard are checked during the input for their validity. An underrun or an exceeding of the value range is displayed e.g. with the following error message:



The parameter input only can be completed by a valid value.

## 6.7 Status messages

### [\[4\] Status Bar](#)



#### A

##### *Communication started*

Is displayed, if from the offline operation is changed over into the online operation. If the connection can be established without problems, this message can't be seen for the user. With the connection establishment a sequence of initialization processes is started, whereby the message *Communication started* is displayed only very briefly.

If the connection can't be established for any reason or is faulty, this message also can stop in this status.

##### *Communication stopped*

Is displayed, if from the online operation is changed over into the offline operation.

##### *Communication interrupted* (see also chapter 8.1, page 22)

Is displayed, if the online connection to the device is interrupted for longer than approximate two seconds. After that the online connection to the device must be carried out once more manually about the program.

##### *Search Baud rate*

Is displayed, if from the offline operation is changed over into the online operation and by the initialization process the baud rate setting is carried out.

If the connection can't be established for any reason or is faulty, this message also can stop in this status till the communication can be established.

##### *Get Device-ID*

Is displayed, if from the offline operation is changed over into the online operation and by the initialization process the device-ID of the loaded parameter-file is compared with the device.

If the connection can't be established for any reason or is faulty, this message also can stop in this status.

##### *Waiting for parameter list*

Is displayed briefly, if from the offline operation is changed over into the online operation and by the initialization process the parameter list from the device is provided for the parameter comparison.

If the connection can't be established for any reason or is faulty, this message also can stop in this status. In this connection, if different parameter data were determined, a warning message is output as follows:



With the acknowledgement of the warning message, or if no parameter difference could be determined, this error message is output:



With the acknowledgement of the error message the process is aborted, the program remains in the offline operation and it is displayed the status *Device-file not available*.

*Read parameter from device*

Is displayed, if from the offline operation is changed over into the online operation and by the initialization process the parameter out of the device are transmitted to the PC-program.

If the connection can't be established for any reason or is faulty, this message also can stop in this status.

*Write parameter to device*

Is displayed, if in the online operation parameters are transmitted to the device.

*Read cyclic*

Is displayed after the initialization process in the online operation and if the communication to the device operates error-free.

*Device-file not available!* (see also chapter 8.1, page 22)

Is displayed, if from the offline operation is changed over into the online operation and no device-file could be found for the connected device. Reasons for this can be:

- the file was moved or deleted on the file system
- the file was not delivered with the program

Please request the corresponding device-file  
(see program message)

## B

 *Parameter list not actualised!*


Is displayed, if parameters are sent to the device in the online operation and a disturbance is occurring in the communication at the moment of the data transmission. This circumstance can in addition be displayed with an error message depending upon type of defect. The parameter transmitting must be carried out once again.

 *Parameter list ok*

Is displayed in the online operation, if parameters are sent to the device or if parameters are received from the device and the data transmission without disturbance (no parameter difference PC <--> Device) could be executed.

 *Parameter changed!*

Is displayed, if in the online operation in the program surface parameters were modified and not yet to the device were transferred. In the offline operation this is the note for the fact that the parameters were not stored yet into the parameter-file.


 *no option-file load* (see also chapter 8.1, page 22)

Is displayed, if no option-file could be loaded to the device file. Reasons for this can be:


- till now no option-file for the device created
- the place of origin of the created option-file was moved or deleted on the file system

The message is overwritten again by following actions, e.g. at a parameter modification.

**C**

*Offline!* 

Is displayed, if the program is in the offline operation.

*Online!* 

Is displayed, if the program is in the online operation. After successful connection establishment additionally the spent online time is indicated.

## 7 Firmware-Update

In some cases it is necessary to carry out a device firmware update in the field., e.g. if new functionalities of the device must to be used.

The firmware update can be made only in arrangement with TR-Electronic. For this the following data are needed:

*Device:*  
*Firmware-Version:*  
*Firmware-Date:*

see also the information "**The section Online...**" in the lower part of page 16.

About the menu *Help-->Program-Info* the

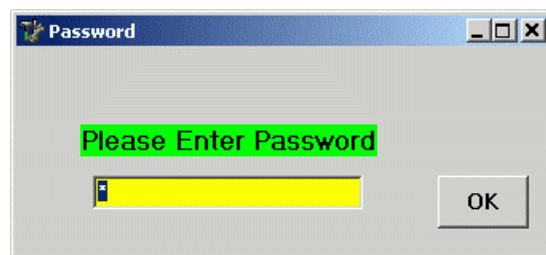
*Program version* and  
*Driver version*

must be recorded.

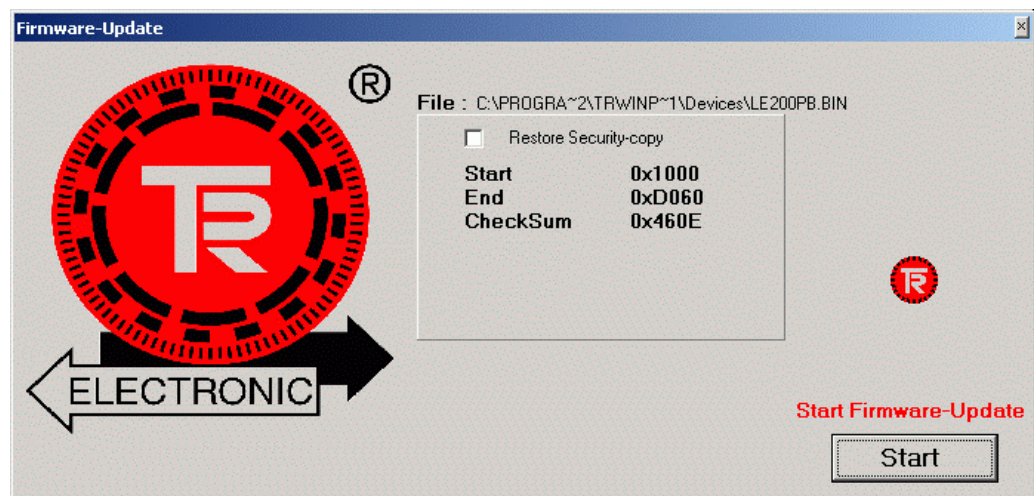
Suitably to the data specified above TR-Electronic generate a new device-file (\*.tr) and the corresponding binary-file (\*.bin). These two files must be copied into the subdirectory "... \Devices" of TRWinProg.

While loading of the new device-file the firmware-update symbol "🔧" is inserted in the symbol bar. Now the firmware update can be carried out in the online operation about the symbol 📁.

In the following window the password must be entered, which was agreed with TR-Electronic (notice upper case-/ lower case - printing !):



Start the firmware-update about the *Start* button.




## 8 Global error- / warning messages




### 8.1 Causes and remedies




#### 8.1.1 Status bar

<b>Program message</b> <i>Communication interrupted</i>
<b>Cause</b> The online connection to the device was interrupted for longer than approx. 2 s.
<b>Remedy</b> <ul style="list-style-type: none"> <li>• Guarantee when using an IrDA adapter: <ul style="list-style-type: none"> <li>- that the transmission distance (transmitter &lt; -- &gt; receiver) was not been interrupted by objects, external influences (e.g. strong external light sources) etc.</li> <li>- the IrDA adapter is aligned to the device,</li> <li>- the distance IrDA adapter &lt;--&gt; device is within the given limits</li> </ul> </li> <li>• Check COM interface connector for correct fit.</li> <li>• Check voltage supply of the device, which is to be programmed.</li> <li>• Exclude that another software uses the selected COM port.</li> <li>• Check whether a power management function of the PC possibly reduces the voltage supply of the COM ports or switches off.</li> </ul>




#### 8.1.2 Error messages



<b>Program message</b>  <i>Communication not established or disturbed!</i>
<b>Cause</b> Via the selected port interface no connection to the device could be established.
<b>Remedy</b> <ul style="list-style-type: none"> <li>• Guarantee that via the menu <i>Extra --&gt; Global --&gt; COM-Port</i> a COM port physically available at the PC was selected and the adapter is connected correspondingly.</li> <li>• Exclude that another software uses the selected COM port.</li> <li>• Check whether a power management function of the PC possibly reduces the voltage supply of the COM ports or switches off.</li> </ul>

<p><b>Program message</b></p> <p> <i>Wrong Device-ID !!</i></p>
<p><b>Cause</b></p> <p>In the offline operation to the device-file (device-type) a false option-file (*.prm) was loaded. About the device-ID the device-type is defined and therefore guaranteed, that only suitable parameters to a device-type can be loaded via the option-file.</p>
<p><b>Remedy</b></p> <ul style="list-style-type: none"> <li>• Select and load an option-file corresponding the device-file.</li> <li>• If no suitable option-file is available, modify the parameters under the loaded device-file according to the requirements and save (<i>File --&gt; Save</i>) it as option-file (*.prm), then load the new option-file into the program.</li> </ul>
<p><b>Program message</b></p> <p> <i>No option-file !!</i></p>
<p><b>Cause</b></p> <p>At the loading of a device-file in the offline operation or with the online connection establishment the option-file created last for the device-file (* prm) could not be found. If "TRWinProg" is used as work-directory, the file location of the option-files is the directory-path</p> <p>"x:\TRWinProg\Data\*.prm", in which x must be replaced by the corresponding drive letter.</p>
<p><b>Remedy</b></p> <ul style="list-style-type: none"> <li>• Check whether the folder or the option-file has not been moved, deleted or renamed on the file system.</li> <li>• With data loss the option-file in the program must be created newly.</li> </ul>
<p><b>Program message</b></p> <p> <i>Wrong option-file !!</i></p>
<p><b>Cause</b></p> <p>When opening an option-file in the offline operation a modification of this file was determined.</p>
<p><b>Remedy</b></p> <ul style="list-style-type: none"> <li>• If the modification cannot be cancelled by editing in a text editor, a new option-file with the desired adjustments must be created.</li> </ul>


<p><b>Program message</b></p> <p> <i>Fail parameter-check !</i></p>
<p><b>Cause</b></p> <p>With transmitting of parameters to the device a global parameter write-error is occurred.</p>
<p><b>Remedy</b></p> <ul style="list-style-type: none"> <li>• If communication disturbances can be excluded, the process should be repeated. If no parameters can be transferred to the device despite several trials, please contact TR-Electronic.</li> </ul>
<p><b>Program message</b></p> <p> <i>Dynamic-Link-Library TRWPDLL not available ! Online-functions are disabled !</i></p>
<p><b>Cause</b></p> <p>At the program start the program library "TRWPDLL.dll" could not be found. If "TRWinProg" is used as work-directory, the file location of the program library is the directory-path "x:\TRWinProg\DLLs\TRWPDLL.dll", in which x must be replaced by the corresponding drive letter.</p>
<p><b>Remedy</b></p> <ul style="list-style-type: none"> <li>• Check whether the folder or the program library has not been moved, deleted or renamed on the file system.</li> <li>• At data loss, restore the file over the TR-program-CD or request the file about TR-Electronic.</li> </ul>
<p><b>Program message</b></p> <p> <i>Device-file not available ! Please ask Fa. TR-Electronic for following file: *.tr</i></p>
<p><b>Cause</b></p> <p>At the attempt to change over into the online operation no device-file could be found for the connected device. If "TRWinProg" is used as work-directory, the file location of the device-files is the directory-path "x:\TRWinProg\Devices\*.tr", in which x must be replaced by the corresponding drive letter.</p>
<p><b>Remedy</b></p> <ul style="list-style-type: none"> <li>• Check whether the folder or the device-file has not been moved, deleted or renamed on the file system.</li> <li>• At data loss, restore the file over the TR-program-CD or request the file about TR-Electronic.</li> </ul>





<p><b>Program message</b></p> <p> <i>No device-type-files found !</i></p>
<p><b>Cause</b></p> <p>At the program start not one device-file could be found in the directory for the device-files. If "TRWinProg" is used as work-directory, the file location of the device-files is the directory-path  <b>"x:\TRWinProg\Devices\*.tr"</b>, in which <b>x</b> must be replaced by the corresponding drive letter.</p>
<p><b>Remedy</b></p> <ul style="list-style-type: none"> <li>• Check whether the folder or the files have not been moved, deleted or renamed on the file system.</li> <li>• At data loss, restore the files over the TR-program-CD or request the files about TR-Electronic.</li> </ul>
<p><b>Program message</b></p> <p> <i>Directory with device-type-files doesn't exist !</i></p>
<p><b>Cause</b></p> <p>At the program start the directory for the device-files could not be found. If "TRWinProg" is used as work-directory, the file location of the device-files is the directory-path  <b>"x:\TRWinProg\Devices"</b>, in which <b>x</b> must be replaced by the corresponding drive letter.</p>
<p><b>Remedy</b></p> <ul style="list-style-type: none"> <li>• Check whether the folder has not been moved, deleted or renamed on the file system.</li> <li>• At data loss, restore the file over the TR-program-CD or request the file about TR-Electronic.</li> </ul>
<p><b>Program message</b></p> <p> <i>Device-file not valid !</i></p>
<p><b>Cause</b></p> <p>At the loading of a device-file in the offline operation or with the online connection establishment it was determined, that the device-file is obsolete.</p>
<p><b>Remedy</b></p> <ul style="list-style-type: none"> <li>• Request the device-file about TR-Electronic.</li> </ul>

<b>Program message</b>  <i>Device not identified !</i>
<b>Cause</b> <p>At the attempt to change over into the online operation the connected device could not be identified with the device-ID/parameter list.</p>
<b>Remedy</b> <ul style="list-style-type: none"> <li>• If communication disturbances can be excluded, the process should be repeated. If no identification of the connected device can be carried out despite several trials, please contact TR-Electronic.</li> </ul>
<b>Program message</b>  <i>Error-No.: x unknown !</i>
<b>Cause</b> <p>A process has caused an unknown error in the program.</p>
<b>Remedy</b> <ul style="list-style-type: none"> <li>• If communication disturbances can be excluded, the process should be repeated. If the error occurs repeatedly despite several trials, please contact TR-Electronic.</li> </ul>

### 8.1.3 Warning messages

<b>Program message</b>  <i>No HTML-Browser found ! Help-function is disabled !</i>
<b>Cause</b> <p>At the program start no installed Web-Browser could be determined, or a version was detected, which does not co-operate with the program. Thereby the help-files cannot be displayed.</p>
<b>Remedy</b> <ul style="list-style-type: none"> <li>• To be able to use the help-function, the MS-Internet-Explorer as of version 4 should be installed.</li> </ul>

<b>Program message</b>  <i>language not available at present !</i>
<b>Cause</b> The language chosen by the program <i>Extra --&gt; Global --&gt; Language</i> is not available at present.
<b>Remedy</b> <ul style="list-style-type: none"><li>• Select another language or ask TR-Electronic when the desired language will be available.</li></ul>
<b>Program message</b>  <i>Device-Date changed !! Communication startup new !!</i>
<b>Cause</b> At the attempt to change over into the online operation a data difference was detected during the data transmission from the device to the PC.
<b>Remedy</b> <ul style="list-style-type: none"><li>• If communication disturbances can be excluded, the process should be repeated. If the warning occurs repeatedly despite several trials, please contact TR-Electronic.</li></ul>

## 9 Accessories

490-00301	PC adapter
490-00105	TR-PT-15/2: Switch cabinet module for PC adapter connection
490-00320	IrDA COM-Port Serial adapter