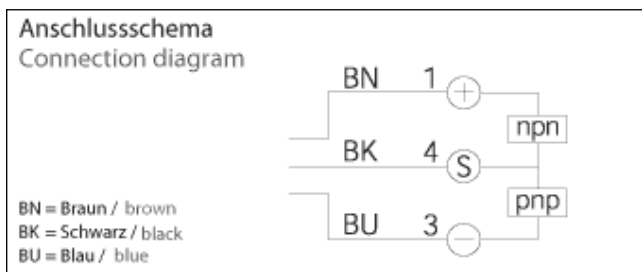


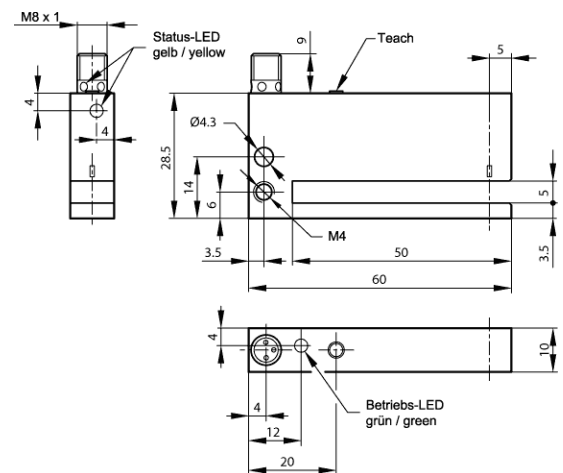
Optical label sensor

- **Fast, simple, reliable:**
 - sensitivity adjustment via the teach key
 - Auto-teach during a running process
- Remote teach option with key-lock function
- LED indicator for the teach procedure
- Detection of an extremely wide range of different labels
- Large functional reserve
- To be integrated in edge of the label dispenser



Safety instructions

These instruments shall exclusively be used by qualified personnel. The instruments are not to be used for safety applications, in which safety of persons depends on proper operation of the instruments.



Technical Details (typ.)

Emitted light	infrared 880 nm, clocked
Sensitivity adjustment	teach key + external teach
Slot width	5,0 mm
Label interspace	> 2 mm
Service voltage	10 ... 35 V DC
Output	pnp/npn, 200 mA, NO/NC switchable
Internal power consumption	< 35 mA
Voltage drop	< 2,0 V
Switching hysteresis	3.000 Hz
Switching hysteresis	< 0,15 mm
Ambient temperature	-10 ... +60 °C
Ambient light immunity	100.000 Lux
Protection class	IP 67
Casing material	die-cast zinc, black lacquered finish
Connection	connector M8, 4 pin